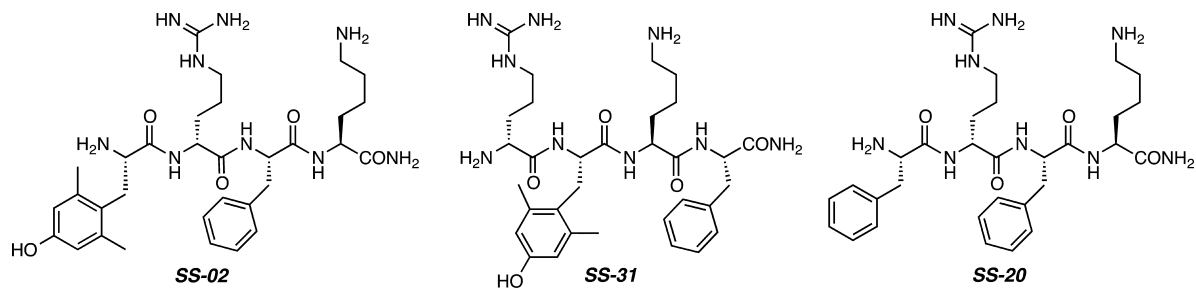


**Correction to Targeting Mitochondria** [*Acc. Chem. Res.* **2008**, *41*, 87–97. DOI: 10.1021/ar700135m]. Adam T. Hoye, Jennifer E. Davoren, Peter Wipf\*, Mitchell P. Fink, Valerian E. Kagan

The peptide sequences in Figure 5 were inadvertently drawn in the reverse order and should have appeared as shown in this correction.



**FIGURE 5**

DOI: 10.1021/ar300293e  
Published on the Web 11/12/2012